

Tracking Maritime Attacks in the Middle East Since 2019

by [Noam Raydan \(/experts/noam-raydan\)](#), [Farzin Nadimi \(/experts/farzin-nadimi\)](#)

Aug 3, 2024

Also available in

[Farsi \(/fa/policy-analysis/rdgyry-hmlat-dryayy-dr-khawrmyanh-az-sal-2019\)](#)

Updated Mar 20, 2025

ABOUT THE AUTHORS



[Noam Raydan \(/experts/noam-raydan\)](#)

Noam Raydan is a Senior Fellow at The Washington Institute.



[Farzin Nadimi \(/experts/farzin-nadimi\)](#)

Farzin Nadimi, a Senior Fellow with The Washington Institute, is a Washington-based analyst specializing in the security and defense affairs of Iran and the Persian Gulf region.



Articles & Testimony

Part of a series: [Maritime Spotlight \(https://www.washingtoninstitute.org/policy-analysis/series/maritime-spotlight\)](https://www.washingtoninstitute.org/policy-analysis/series/maritime-spotlight)

or see Part 1: [Amid Red Sea Crisis, Saudi Company Launches North Shipping Service\(/policy-analysis/amid-red-sea-crisis-saudi-company-launches-north-shipping-service\)](#)

An interactive map showing the extent to which Houthi forces, their Iranian military patrons, and other actors have been targeting vessels in regional waterways for years, including well before the Hamas-Israel war.

[This map is no longer updating as of March 2, 2026. View the new Maritime Attacks in the MENA Region \(Since 2017\) interactive platform for up-to-date data. \(/menamaritime/\)](#)

The Hamas-Israel war put a spotlight on local maritime threats, with Houthi militants and allied military forces exchanging strikes while international shipping companies scramble to keep their vessels from being targeted. Yet these threats have been evolving since well before the Gaza crisis.

To capture the pulse of these attacks and their recent escalation, The Washington Institute has traced major shipping incidents in a series of interactive maps covering the periods before and during the Gaza war, with an initial batch of incident entries published January 31, 2024, and regular updates made as the situation evolves. Also included are sections focusing on featured incidents and policy recommendations from Washington Institute

experts.

[View the project on StoryMaps.](#)

<https://storymaps.arcgis.com/stories/756ca769315d4b879ca7fdd6bd4a82be>



PART OF A SERIES

[Maritime Spotlight \(/policy-analysis/series/maritime-spotlight\)](/policy-analysis/series/maritime-spotlight)



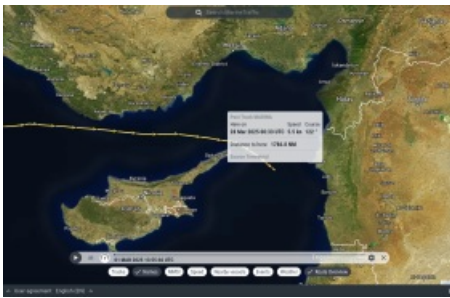
What One LPG Tanker Reveals About the Reliability of AIS Data in Hot Spots

(/policy-analysis/what-one-lpg-tanker-reveals-about-reliability-ais-data-hot-spots)



Lethal Attacks Show Strengthened Houthi Control over Red Sea Transit

(/policy-analysis/lethal-attacks-show-strengthened-houthi-control-over-red-sea-transit)



Hezbollah-Linked LPG Tanker Sails to East Mediterranean

(/policy-analysis/hezbollah-linked-lpg-tanker-sails-east-mediterranean)

RECOMMENDED



BRIEF ANALYSIS

War Comes to the Gulf

Mar 3, 2026

◆
Elizabeth Dent,
Michael Eisenstadt,
Noam Raydan,
April Longley Alley

(/policy-analysis/war-comes-gulf)



BRIEF ANALYSIS

[The U.S. and Israel Strike Iran](#)

Mar 2, 2026



Holly Dagues,
Dennis Ross,
Dana Stroul,
Robert Satloff

[\(/policy-analysis/us-and-israel-strike-iran\)](#)



ARTICLES & TESTIMONY

[The Long, Sad History of U.S. Regime Change Promises](#)

Mar 2, 2026



Robert Satloff

[\(/policy-analysis/long-sad-history-us-regime-change-promises\)](#)

TOPICS

[Energy & Economics \(/policy-analysis/energy-economics\)](#)

[Gulf & Energy Policy \(/policy-analysis/gulf-energy-policy\)](#)

[Military & Security \(/policy-analysis/military-security\)](#)

REGIONS & COUNTRIES

[Gulf States \(/policy-analysis/gulf-states\)](#)

[Iran \(/policy-analysis/iran\)](#)